



Frilford Heath
Golf Club



The Worshipful Company of Lightmongers Charity Golf Day

Tuesday 28th May 2024

Itinerary

- 12:00 - Ploughman's Lunch Buffet Available**
- Tee Times to Be Advised - Stableford Competition**
- 19:30 - Awards Dinner** (*Jacket and Tie required*)

Address

**Frilford Heath Golf Club,
Oxford Road,
Abingdon,
Oxon,
OX135NW**

Additions

- **18 Hole Buggy - £40.00 per buggy**
- **18 Hole Electric Trolley - £15.00 per trolley**

It is advisable to book in advance from the pro shop.

The Red Course

Par 72 | Yardage 7015



The original Red Course was laid out in 1908 by five times Open champion JH Taylor. An authentic championship challenge offering a traditional heathland experience with pushed up greens and fairways that demand accurate driving to score well.



The strong stretch between holes 5 and 9 include four hefty two shot holes and a par three at the 9th that many consider memorable.

Completing the turn sees no respite, where a finishing stretch includes seven consecutive par fours to close your round.

A recent host of Regional Qualifying for The Open Championship, the course has also hosted the English Amateur and European Tour 1st Stage Qualifying since 2011.

Frilford Heath Golf Club look forward to welcoming the Worshipful Company of Lightmongers to play their charity golf day and wish you a fun and successful day.

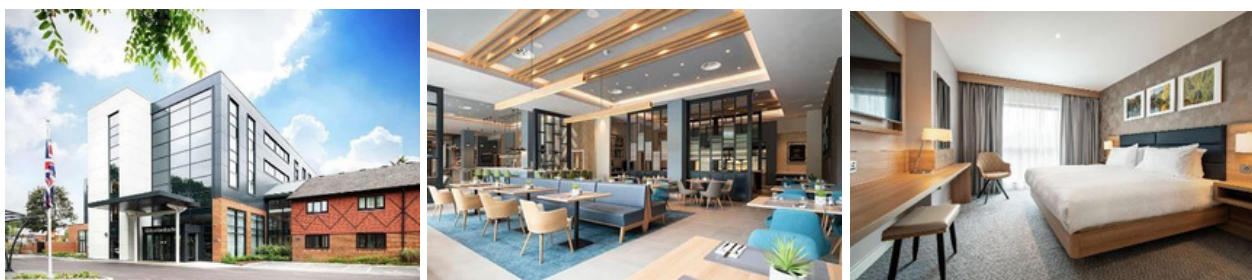


Accommodation Partners

There are some great hotels close to Frilford Heath and we have connected with some to provide a discount for the event. (Subject to availability)

The Hilton Garden Inn at Abingdon

Tel: 01335 425570, Option 4

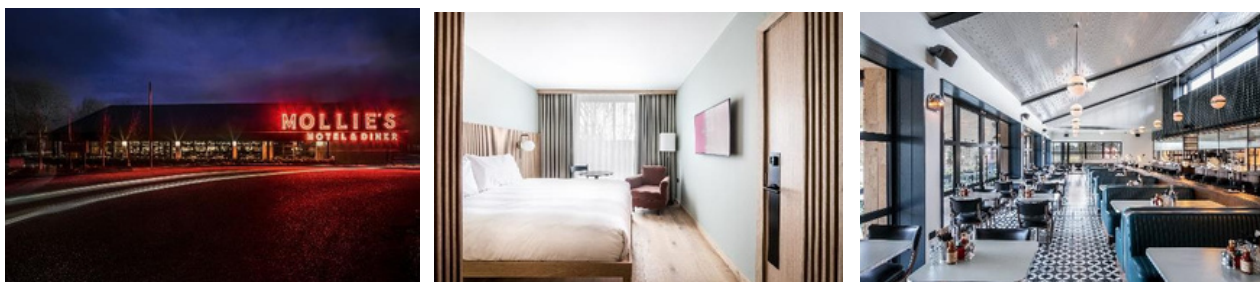


Located 10 minutes away from the Golf Club and just off the A34, the Hilton Garden Inn at Abingdon is the perfect base for a trip to Frilford. It is also a mile from the quaint market town of Abingdon that sits on the River Thames and Oxford is less than eight miles away which can be reached by taxi or bus.

Receive 15% off the Best Available Rate when using the code: **N3218947**

Mollie's Motel & Diner, Oxfordshire

Tel: 01367 707777

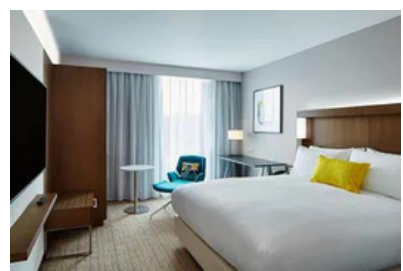


Located 10 minutes away from the Golf Club off the A420, Mollie's offers high spec contemporary rooms as well as the classic American Diner. Recently redesigned by Soho House. This motel is perfect for those wanting to relax in an easy-going motel before heading to the golf course.

Receive 15% off the Best Available Rate when using the code: **FRILFORD_15**

The Courtyard by Marriott at Oxford South

Tel: 01865 671480



A 15-minute drive just off Didcot Parkway on the A34, the Courtyard Marriott is a great location for those travelling from London and the south of England. The hotel is also 42 minutes from Heathrow Airport and is accessible via Didcot Parkway Train Station with access to Central London.

Receive 20% off the Best Available Rate when using the code: **ZZ1**

The Randolph Hotel by Graduate Hotels

Tel: 0344 879 9132 Email: info@graduateoxforduk.co.uk



Located 25 minutes from the club, complete your Oxfordshire visit by staying in one of the country's most iconic hotels. The Randolph Hotel, which is famous for its links with Inspector Morse, is in the heart of Oxford with the famous colleges and museums only a short walk away.

